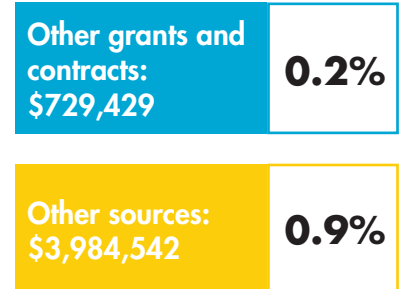
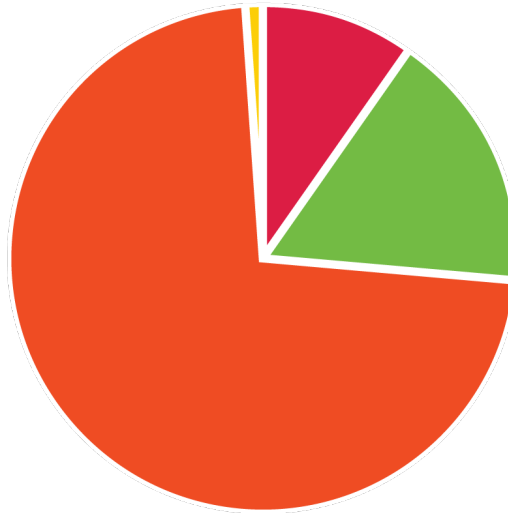
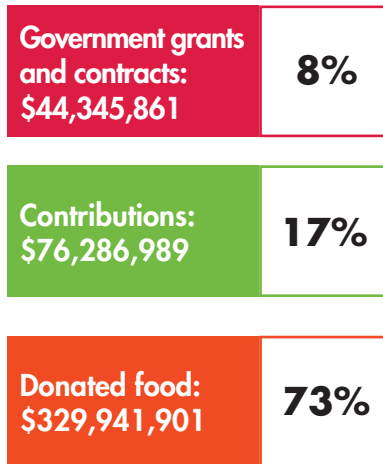
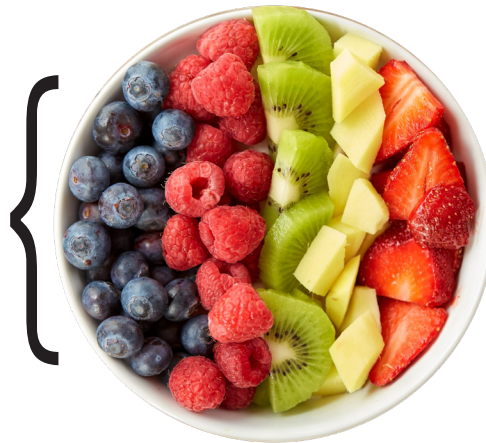


### Where our resources come from:



### How we use our resources:

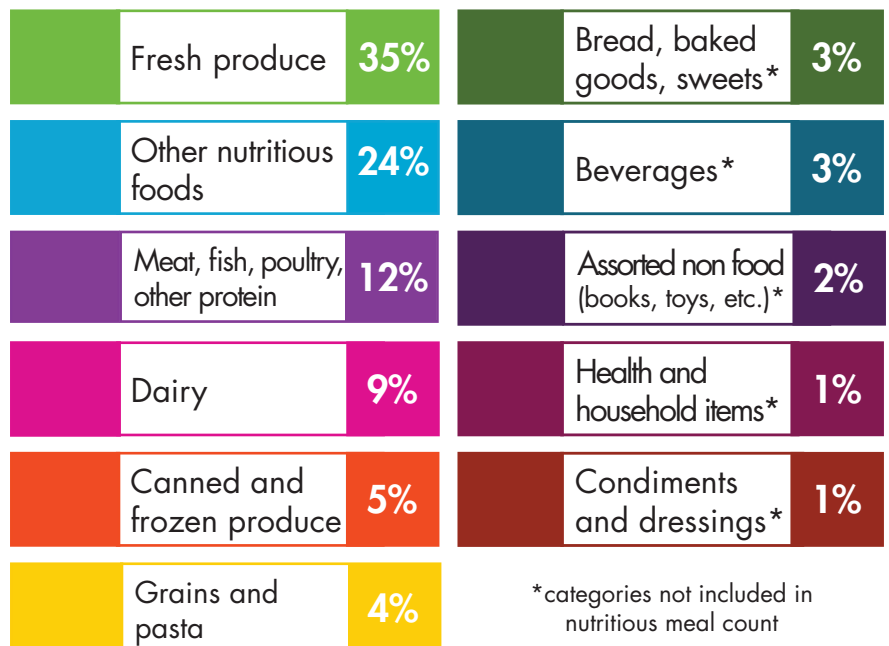
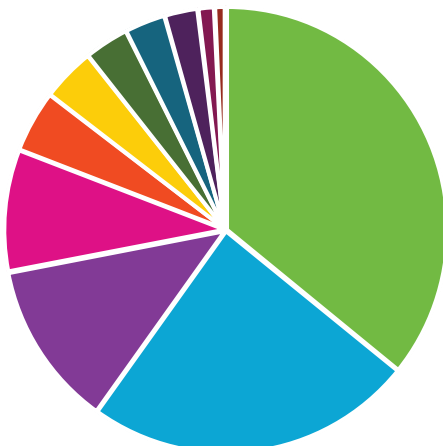
**96.7%** Food Bank Operations  
\$413,944,732



**1.9%** Management and General  
\$8,243,350

**1.4%** Fundraising  
\$5,794,250

### What we distribute:



^includes meals made possible through SNAP benefits received with help from HFB

\*categories not included in nutritious meal count

# houston**food**bank Annual Report FY 21: Your Impact

In Houston Food Bank's 18-county service area, there are more than **1 million food insecure individuals**, meaning they cannot afford enough food to fuel a regularly healthy lifestyle. **The impact of the Houston Food Bank extends beyond putting food on the table.** We distribute millions of pounds of nutritious food to the community with the goal of not only providing nourishment but also reducing the hardship in making difficult financial choices such as deciding between paying for medicine or paying for groceries. Houston Food Bank also provides programs and services aimed at helping families achieve long-term stability including nutrition education, job training, health management, and help with securing state-funded assistance. In collaboration with the community, we advocate for policy change to increase access to food and further improve the lives of those we serve.

**With your help, we are providing food for better lives.**

## FY 2021 Achievements with Your Help:



**207 million** nutritious **meals** made possible



**1,800+ community partners** worked with the food bank to provide food and services to people throughout our 18-county service area



**8.5 million meals** provided to kids through our Backpack Buddy, Kids Cafe, and School Market programs



**91 million pounds** of fresh **produce** provided



**18 million SNAP meals** accessed through HFB's SNAP (Supplemental Nutrition Assistance Program) application assistance



**193 nutrition education participants** took classes



**12,532 teachers** received school supplies through Teachers Aid program



**149,453** of **volunteer time**, equivalent to **71** full-time **employees**



**27,746** individual **people volunteered**



★★★★★  
**CHARITY NAVIGATOR**  
Four Star Charity

houston**food**bank   
Our Mission: Food for better lives  
Our Vision: A world that doesn't need food banks

**\$10 provides access to 30 meals**



## houston**food**bank **Annual Report FY 21: Donors**

The following donors helped Houston Food Bank provide *food for better lives* through their generous gifts made in July 2019 – June 2020 of \$5,000 or more. In addition to the donors listed below, Houston Food Bank also wishes to gratefully acknowledge the many contributions made by members of Faithful Friends, our monthly giving society.

### **\$250,000 +**

Action Now Initiative LLC  
Aramco Services Company  
Bank of America  
The Brown Foundation, Inc.  
Chevron Corporation  
The Cullen Foundation  
The Elkins Foundation  
Feeding America  
Feeding Texas  
The Hearst Foundation  
H-E-B Grocery, Inc.  
Kinder Foundation  
LyondellBasell Industries  
McKesson Foundation  
The Mundy Family Foundation  
Phillips 66  
The Robert and Janice McNair Foundation  
Ting Tsung and Wei Fong Chao Foundation  
United Airlines  
Wal-Mart Stores Inc.  
Whalley Foundation

### **\$100,000 - \$249,999.99**

AIG  
The Albertsons Companies Foundation

Allegiance Bank  
Beaumont Foundation of America  
BHPB PET  
Calpine Corporation  
Cheniere Energy, Inc.  
Citgo Petroleum Corporation  
The Cockrell Foundation  
ExxonMobil Foundation  
Gallery Furniture  
Garver/Black/Hilyard Family Foundation  
Hattiesburg MS  
Houck Family Foundation  
Houston Astros Foundation  
Houston Texans Foundation  
J.P. Morgan Chase Bank  
Jackson Foundation  
James Parsons and Todd Spiewak Philanthropic Program  
Lakewood Church  
John P. McGovern Foundation  
McLeod Sears, LLC  
PayPal  
SABIC  
The Samuels Foundation  
Sanchez Oil & Gas Corporation  
Schwab Brokerage  
The Spirit Golf Association

Steven & Alexandra Cohen Foundation  
Sysco Corporation  
Tres Grace Family Foundation  
United Healthcare  
Whataburger

### **\$50,000 - \$99,999.99**

Action Gypsum Supply  
Amazon Smile  
Briggs Equipment  
Charities Aid Foundation America  
Cigna Foundation  
ConocoPhillips  
ExxonMobil Foundation  
Faust Distributing Company, Inc.  
Four Lee Foundation  
Halliburton Charitable Foundation  
Halliburton Charity Golf Tournament, Inc.  
Intercontinental Exchange, Inc.  
The John M. O'Quinn Foundation  
Judith & Stanley Hoffberger Family Foundation  
Koston Farris Giving Fund  
Lockton Cares, Inc.  
Lyons Foundation



Marathon Oil Corporation  
Noble Energy, Inc.  
Occidental Petroleum Corp  
The Patterson Family Foundation  
Phillips Family Foundation  
ProLogis Foundation  
TC Energy  
Texas Mutual Insurance Company  
The Jacobson Family Foundation  
The Sarofim Foundation  
Verizon Foundation  
Virani Family Fund  
Webber LLC  
Wells Fargo Foundation  
Whole Foods Market  
The Winston-Salem Foundation  
Zions Bancorporation

**\$25,000 - \$49,999.99**

Accenture  
The Advent P2 Energy Relief Fund  
AF Global Corp  
American Bureau Of Shipping  
America's Best Charities Houston SECC-33  
Amerigroup  
BASF Corporation  
Buckeye Partners  
Michael and Rebecca Cemo Foundation  
Chinmaya Mission Houston  
Cigna Health and Life Insurance Company  
The Clayton Fund, Inc

Cnooc Petroleum U.S.A. Inc.  
Covia Corporation  
Estate of Charlene Reta Crooks  
Dow Chemical Company  
Dunaway Anderson Trust  
Energy Transfer Partners, L.P.  
The Energy Transfer/Sunoco Foundation  
Engie North America Inc.  
Enterprise Holdings Foundation  
Equinor  
Marvy Finger Family Foundation  
First Baptist Church - Houston  
Fluor  
Frankel Family Foundation  
The Frees Foundation  
Gardner Denver  
Glassell Family Foundation, Inc.  
Goldman Sachs Philanthropy Fund  
Granite Properties  
Greene, Tweed & Co., Inc  
Hancock Bank  
The Hillcrest Foundation  
Houston Endowment, Inc.  
International Management District  
The Joint Chinese College Alumni  
JP Morgan Chase & Company  
KPMG LLP  
Living Spaces Furniture  
Marek Family Foundation  
MD Anderson Foundation  
The Melbern G. and Susanne M. Glasscock Foundation

MUFG Union Bank  
Northern Trust  
NRG Energy, Inc.  
John O. Peterson Charitable Trust Fund  
The Postl Family Foundation  
Rafiq Enterprises Inc. DBA McDonalds  
ShopCore Properties LP  
Spire - CSR Services  
TASC  
Kittsie and Charlie Thomas Family Foundation  
Total American Services  
U.S. Expeditors  
UBS Financial Services Inc  
Valero Energy  
Vectren Foundation  
The Justin Brooks Verlander Living Trust  
Margaret and David Williams Charitable Fund  
The Woodforest Charitable Foundation

**\$10,000 - \$24,999.99**

Stanford and Joan Alexander Foundation  
Ally Financial Inc  
Maurice Amado Foundation  
American Furniture Warehouse  
Anheuser-Busch, Inc.  
Axiom Space Inc.  
Baird Foundation, Inc.  
Bank OZK  
Barrios Technology  
BASF Foundation USA



BBC Chartering USA LLC  
BBVA Compass Bank  
Victor and Anna Mae Beghini  
Charitable Foundation  
Bennack-Polan Foundation  
The Better Generation  
Bhatia Foundation  
Albert D. and Margaret M.  
Blenderman Fund  
The Breen Family Fund  
BWC Lending, LLC  
Caliber Holdings Corporation  
The Harry S. & Isabel C.  
Cameron Foundation  
The CarMax Foundation  
CBRE Foundation, Inc.  
CenterPoint Energy  
Centrifuge World LLC  
Chevron USA, Inc.  
Citi Group  
Clearway Energy Group Llc  
Clutch Hotel Group Medical  
Center, LLC  
Colonial Penn Life Insurance  
Company  
Comcast  
Comfort Systems USA  
The Community Foundation  
ConAgra Brands Foundation  
Cummins Oil And Gas Center  
Of Excellence  
D & M Leasing Houston  
The Dalkys Foundation  
Dell Inc.  
DentaQuest  
DPR Construction

Dunkin Brands Community  
Foundation  
Emerson  
Flatrock Energy Advisors, LLC  
Ford Motor Company Fund  
Friends Helping Friends  
Frost Bank  
GA Financial Company  
Geico Philanthropic Foundation  
GenOn  
GML Giving Back  
Goulston & Storrs Fiduciary  
Accounts  
W.R. Grace Foundation Inc.  
The Greater Houston Chinese  
Alliance  
The Jack Webster Grigsby  
Foundation  
Grizzle Family Foundation  
Gulf Coast Regional Blood  
Center  
Gulf South  
Alka & Ajay Gupta Foundation  
The George and Mary Josephine  
Hamman Foundation  
Hargrove Engineers Constructors  
Ramesh and Radhika Hariharan  
Foundation  
Albert and Ethel Herzstein  
Foundation  
The Hot Sky Charitable Fund  
Houlihan Lokey  
Houston Apartment Association  
Humana  
Iberia Bank  
Independent Bank

J. E. Fischer Family Partnership  
LTD No 2  
Kacher Pediatric Dentistry  
Keane Group  
Kellogg Company  
The Khourie Family Foundation  
Kiwaniis Foundation of Houston  
KPMG U.S. Foundation  
The Kraft Heinz Company  
LiquidPower Specialty Products  
Inc.  
The Llee Foundation  
MacDonald-Peterson Foundation  
Macy's Bloomingdale's  
Major League Baseball Players  
Trust  
The Florence and William K.  
McGee Jr. Family Foundation  
McKinsey & Company, Inc.  
John & Marjorie Miller  
Charitable Foundation  
The Mitsui USA Foundation  
Mizuho Securities USA Inc  
Monument Chemical LLC  
Morgan Stanley Global Impact  
Funding Trust  
Nacero Inc.  
National Oilwell Varco  
NBA Foundation  
NETCO  
Netrality Parent, LLC  
Oaktree Capital Management,  
L.P.  
Robert R. and Kay M. Onstead  
Foundation  
Robert & Kay Onstead  
Foundation

The Edward and Helen  
Oppenheimer Foundation  
The Orsak-Apple Family Fund  
Owens Corning  
Pappas Restaurants  
Fred and Mabel R. Parks  
Foundation  
The Parten Foundation  
Partners in Building, L.P.  
The Pate Family Fund  
Pattern Energy Group Services  
LP  
Paulea Family Foundation  
PepsiCo Incorporated  
The Plank Companies, Inc  
Porter & Hedges, LLP  
PricewaterhouseCoopers, LLP  
Prosperity Bank  
Regency Crossing, LLC.  
The Alice Kleberg Reynolds  
Foundation  
Robertson-Finley Foundation  
Sam's Club Foundation  
Science Applications  
International Corp  
Stephen M. Seay Foundation  
Share Our Strength  
Shirley and Bruce Stein Legacy  
Fund  
Shrieve Charitable Fund  
Silver Eagle Distributors, L.P.  
Vivian L. Smith Foundation  
Estate of Scott Matthew Souba  
Southern Bancshares,  
Incorporated  
Southern Company Gas

Southwest Management District  
Spotlight Energy  
St. Martin's Episcopal Church  
Starbucks Coffee Company  
Strake Foundation  
Subway  
Swagelok Southeast Texas  
The Tapeats Fund  
Tauber Exploration & Production  
Co.  
U S Coins, LP  
Unilever  
United Concordia  
Vanguard Charitable  
Endowment Program  
Veterans Evacuation Services  
(VES)  
Vinson & Elkins L.L.P.  
Vitol Inc.  
Watertree Ventures, LLC  
The Weingarten Schnitzer  
Foundation, Inc.  
The Williams Foundation  
John R. Wright and Eloise  
Mountain Wright Foundation  
Yurman Family Foundation, Inc.  
The Anne and Henry Zarrow  
Foundation

### \$5,000 - \$9,999.99

3E NDT LLC  
Ad Valorem Advisors  
Alpha Gamma Delta Foundation  
Alpha Phi Alpha Fraternity, Inc  
Ambit Energy  
American Assn of Order of St.  
Lazarus Inc.

The Amin Family Foundation  
Charitable Fund  
ApexOne Investment Partners  
The Aquasol Companies  
Assured Partners  
Austin Family Charitable Fund  
Aveva Inc.  
The Charlotte and Jamil Azzam  
Foundation  
Paul Erb & Barbara Belt Gifting  
Fund  
Black, Mann & Graham, L.L.P.  
Bloomberg L.P.  
Booker Family Foundation, Inc.  
Box Lunch  
Bright Funds Foundation  
British International School Of  
Houston  
Brochsteins Inc.  
Brunetti Family Charitable  
Foundation  
Burnett and Company, Inc.  
Bush Brother & Company  
Cabot Oil and Gas Corporation  
The Gordon A. Cain Foundation  
Callon Petroleum Company  
Calpine Foundation  
Campbell Soup Company  
Cargill Incorporated  
Carpenter Technology  
Carrizo Oil & Gas, Inc.  
Central Bank  
Certarus USA Ltd.  
Charlie's Plumbing, Inc.  
Chris and Merrell Athon Giving  
Fund



Christ the Servant Lutheran Church  
Cimarron  
City of Houston, Combined Municipal Campaign  
Robert L. or Jean Clarke Family Foundation  
The Clorox Company  
Coastal Securities  
Colours  
Cornerstone Building Brands  
Davis Family Charitable Fund  
Davoudi Family Foundation  
Diamond Offshore Company  
The Discover Brighter Futures Fund  
DL Reeve Enterprises LLC  
Eastham Machining International, Inc.  
Eiv Capital, LLC  
Emergency Medical Group, LLC  
Enable Midstream Partners, LLC  
EnQuest Energy Solutions  
Environmental Development Partners, LLC  
FID BKG Svc LLC  
Fidelity Brokerage Services LLC  
Fort Bend Community Church  
Freudenberg Group  
Gene Green Congressional Campaign  
Global Atlantic Financial Group  
GlobalGiving  
Goetz Family Fund  
Golden Thread  
Greater Horizons

The Greentree Fund  
Grits Foundation  
Hackett Family Foundation  
Parker Hannifin Foundation  
HCA Caring for Community  
Henry & Company, P.C.  
Hilltop Securities Inc.  
Houston Civic Events, Inc  
Houston First Church of the Nazarene  
Houston Ladies Tennis Association  
Houston Sports Lions Club  
Houston Trust Company  
Houston Women's Soccer Association  
Humana Health Plan Of Texas  
Humana  
Huntsman International LLC  
IBM International Business Machines Corporation  
JBD Foundation  
Willard and Ruth Johnson Charitable Foundation  
Elva J. Johnston Foundation  
Andy & Cindy Lane Foundation  
The Lanier Law Firm P.C.  
Lazard Freres & Co. LLC  
LDA Management Company, Inc.  
The Francis L. Lederer Foundation  
LGC  
LMC HQ  
Locke Lord LLP  
Nancy Luton Trust

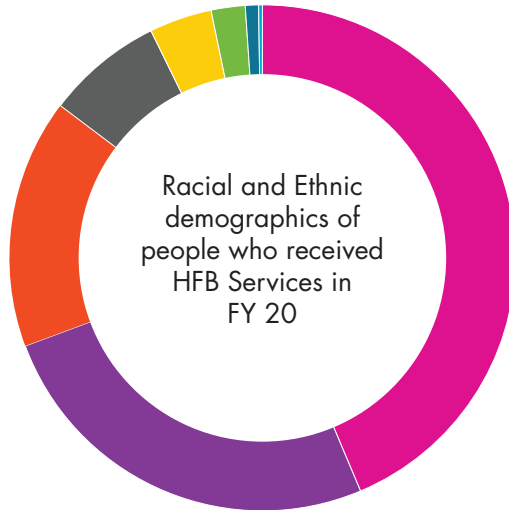
M&D Supply, Inc.  
Main Family Foundation  
Mariner Finance LLC  
McCormick & Co, Inc.  
McDonough Elevators  
McNeill Charitable Foundation  
MD Anderson Center  
Melton Electric, Inc  
OP A Herman Miller Certified Network Dealer  
Mark and Mary Ann Miller Family Foundation  
Mithoff Family Charitable Foundation  
Momentum Minerals  
Murphy Oil Corporation  
Mustang CAT  
Mvm, Inc.  
Nelson Family Foundation  
The Son and Lisa Nguyen Charitable Fund  
Omni Hotels  
On Point Custom Homes  
Oracle America, Inc.  
OSIsoft, LLC  
Permits Plus  
Petrophysical Solutions, Inc  
Pillsbury Winthrop Shaw Pittman Foundation  
Pilot Chemical - Healthy Neighbors  
Pledgeling Foundation  
POA of Pine Shadows  
Precision Drilling Oilfield Services Corporation  
PrimeLending, a PlainsCapital Co.

Primeway Foundation  
Probert Family Trust  
R. E. Smith Foundation  
Ellen and Edward Randall III  
Foundation  
The Reynolds and Reynolds  
Associate Foundation  
RKD Alpha Dog  
Marie Roper Foundation  
Rubber Supply Co.  
Salesforce.org  
Rinku and Kaushal Shah Giving  
Fund  
Sidley Austin, LLP  
Silverbow Resources Operating,  
LLC Charitable Fund Account  
Simpson Thatcher & Bartlett LLP  
SK Foundation  
The J.M. Smucker Company  
Solomon Edwards Group, LLC  
The Southern Region Advertising  
Council  
Southwest Community  
Foundation  
Sparkhound Foundation  
The Abbott and Leslie Sprague  
Family Foundation  
Strayer University  
Summit Industrial Construction  
LLC  
Tanglewood Wealth  
Management Charitable Fund  
Texas Dow Employees Credit  
Union  
Texas Methodist Foundation  
Texsun Swimming Pools & Spas,  
Inc.

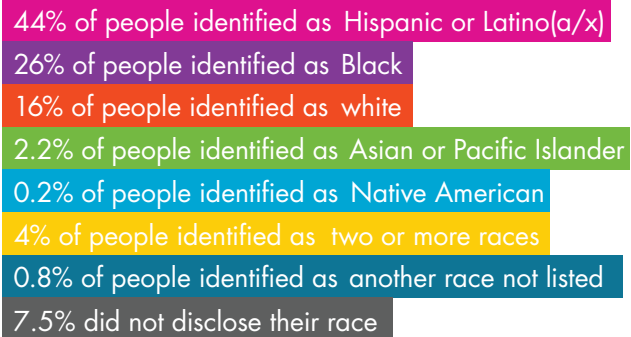
The Allison Foundation  
The Light Of The World Christian  
Fellowship  
Tobin & Rooney, Inc  
Toy Lee Giving Fund  
Two Sigma  
VAALCO  
Valco Industries  
The Vaughn Foundation  
Veritex Community Bank  
The Vermillion Family Foundation  
Inc.  
The Walt Disney Company  
Foundation Matching Gifts  
Weaver and Tidwell Private  
Foundation  
Welcome Group, LLC  
Wendell Family Foundation  
Whitman Family Fund  
Wolar Industrial Inc.  
The Zimmer Family Foundation  
Zoroastrian Association of  
Houston



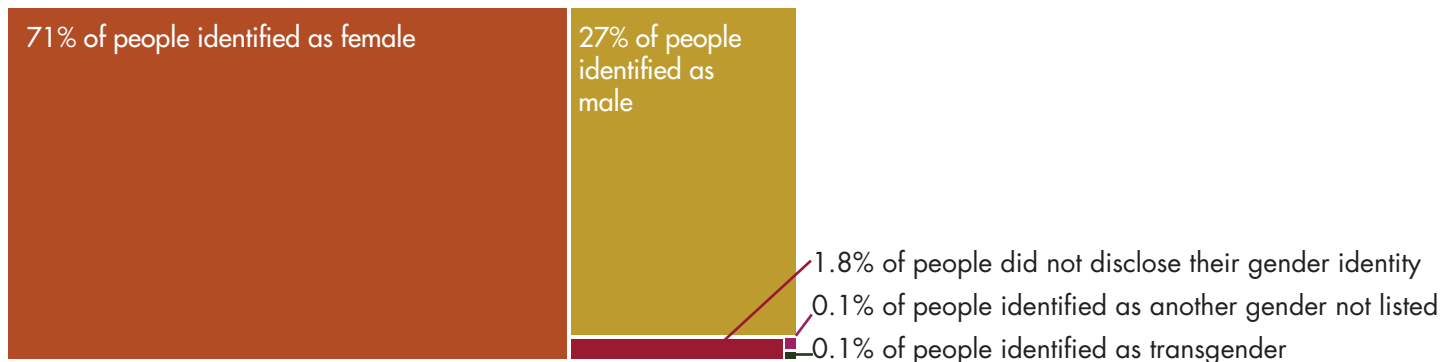
## The People We Help:



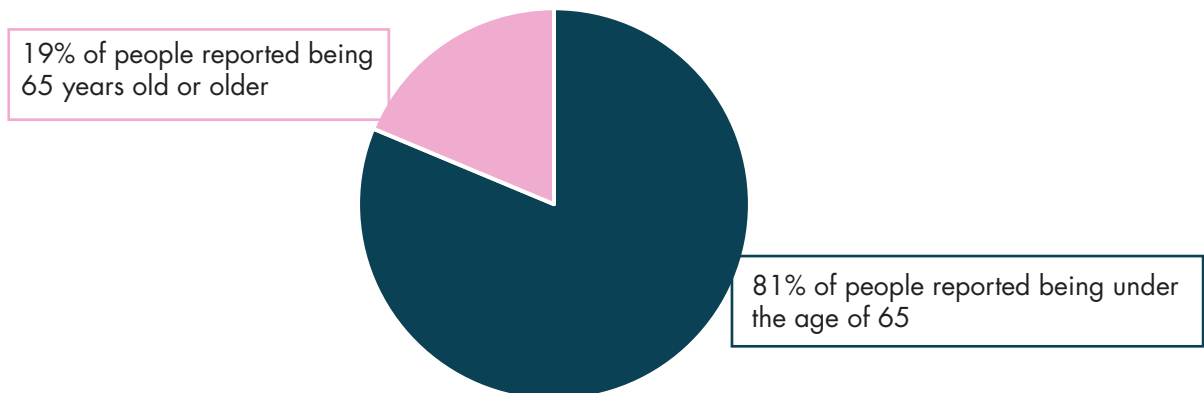
Of people who received services from HFB and whose information was offered and entered in to Link2Feed July 1, 2019 - June 30, 2020:



Gender identities of people who received HFB Services in FY 20:

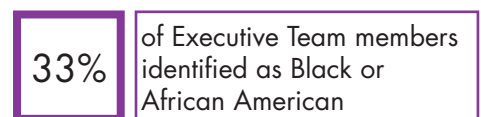
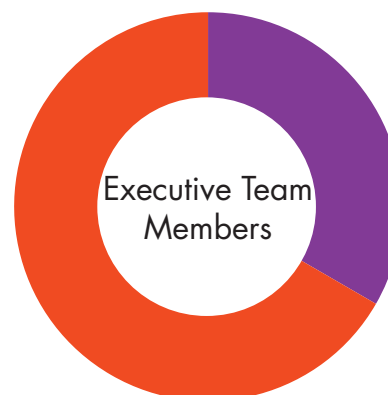
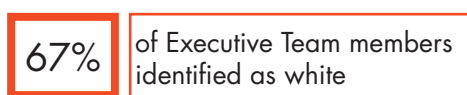
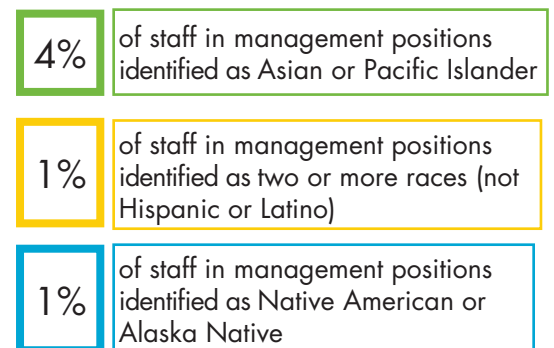
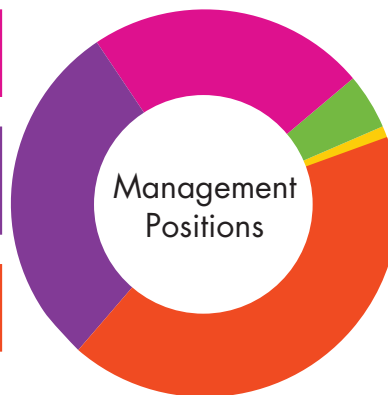
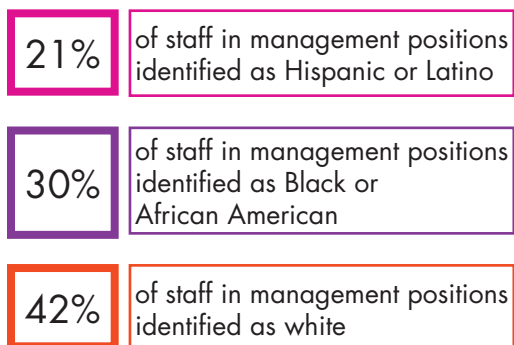
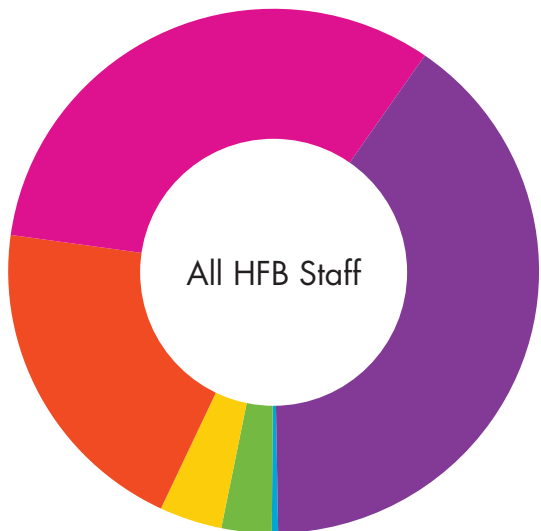


Age breakdown of people who received HFB Services in FY 20:



## Houston Food Bank Staff:

Of Houston Food Bank staff employed June 30, 2021, the following demographics of Race and Ethnicity were reported:





## **Diversity, Equity, and Inclusion Initiatives and Plans for FY 21**

The Houston Food Bank's vision is "A world that doesn't need food banks." In order for us to take steps toward making this vision a reality we must make advances in and commitments to Diversity, Equity, and Inclusion at all levels and functions of the organization. In order to work toward our vision and advance our mission, both internally and externally, we commit to: listen to and promote diverse voices and perspectives, address systemic inequities, including those perpetuated by institutionalized racism, recognize and fix biases, and create environments that embrace and promote our organizational values for all.

### **Equity Work Groups**

Each Equity Work Group (EWG) will be composed of 11 to 14 individuals from across the departments, layers of the organization, races and gender identities. Each group will be charged with first breaking down barriers within the group, building trust and growing understanding about each other and the food bank. Then they will develop recommendations on what we need to do to be the change we want to see on our teams and for the food bank overall. The goal for the EWGs is to help make HFB a great work environment that best utilizes the experiences and perspectives of its team members to drive decisions and uses an equity lens to best meet the needs of its team members.

### **Equity in Pay Project**

Our goal is to pay every food bank employee a living wage and also ensure that we pay a nonprofit adjusted competitive wage. We will make sure no employee is making less than \$15 per hour as well as consult with KPMG to determine salary and pay adjustments that are competitive not just within the non-profit world but also, where possible, within the job market as a whole.

### **Equity Organizational Assessment**

This assessment, spearheaded by our Advocacy department, will help us benchmark where we are as an organization on our journey toward racial equity and help identify specific areas still in need of growth that can help HFB to become more consistently aligned with our commitment to a diverse, inclusive, and more equitable workplace.