



BOARD VISION EXCHANGE

OCTOBER 24, 2017



HEALTH & HUNGER



HEALTH & HUNGER

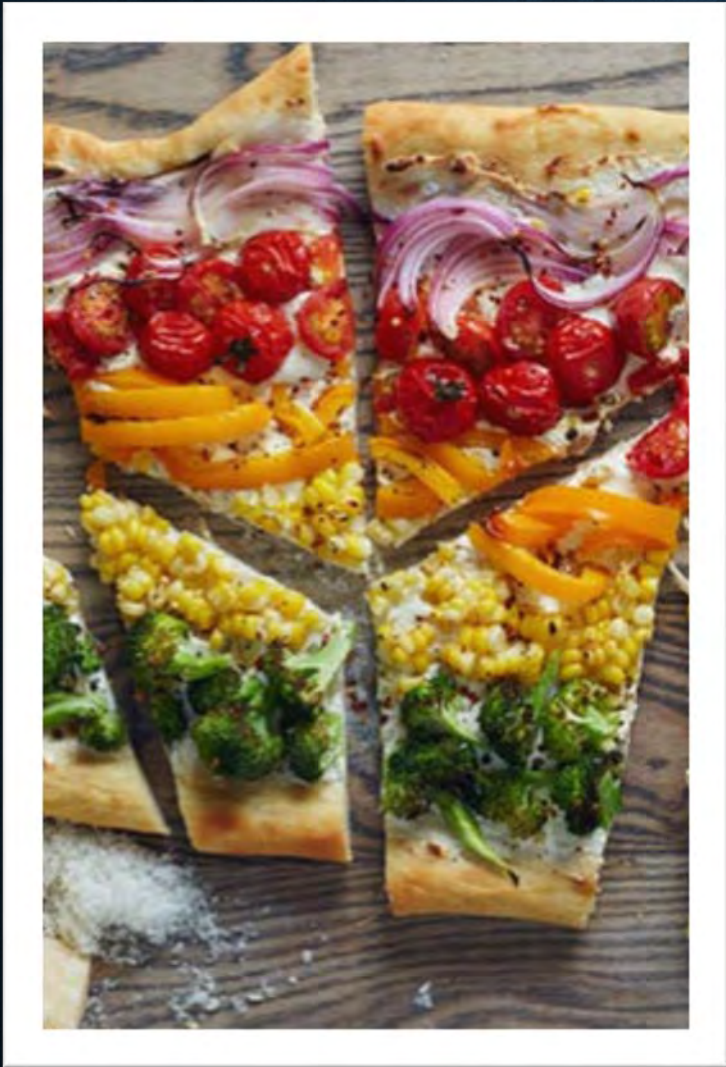
THE JOURNEY HAS JUST BEGUN...



Conceptual Level:

- Paradigm shift
- Calories vs. pounds
- Nutritional education
- Bigger role?

Let's go...



Strategic Level:

- Food sourcing
- Business model changes
- Budget changes
- Food bank talent
- Mission Relevance
- Who else needs to be at the table?



Service Delivery Level:

- Funding provided
- Launching pilots
- Roll-out of proven concepts
- Building our understanding of the healthcare industry, deepening relationships



Generative Level:

- Where are we going?
- 3-5 years out?
- How do we measure success?
- What networks have to be created?
- How do we align “meal GAP” with “healthcare GAP”?



COMMUNITY LEADER AWARENESS

Health And Hunger In Central Florida A Call To Action

September 12, 2017



FLORIDA
HOSPITAL



ORLANDO HEALTH



Second Harvest
FOOD BANK
OF CENTRAL FLORIDA



THE PROBLEM

- Central Florida Food Insecurity:
 - 15.2% Or 631,820 People
 - 114 Million Meal GAP Annually



**SHFB PARTNER AGENCY NETWORK SERVES
500,000 PEOPLE A YEAR**

1 in 6

**PEOPLE ARE STRUGGLING
WITH FOOD INSECURITY**

74%

OF HOUSEHOLDS LIVE
IN POVERTY

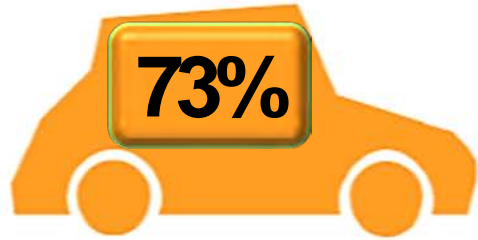
50%

**EXHAUST SNAP BENEFITS
IN TWO WEEKS**

MAKING TOUGH CHOICES: HOUSEHOLD SPENDING TRADEOFFS IN THE PAST YEAR



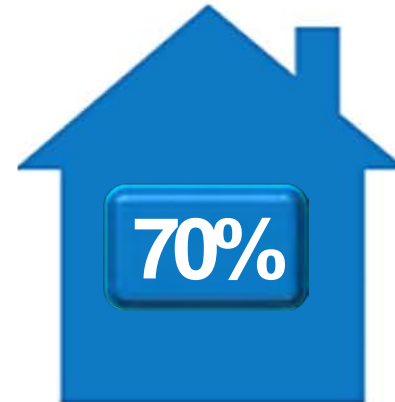
HAD TO CHOOSE
BETWEEN FOOD
AND UTILITIES



HAD TO CHOOSE
BETWEEN FOOD AND
TRANSPORTATION



HAD TO CHOOSE
BETWEEN FOOD
AND MEDICINE OR
MEDICAL CARE



HAD TO CHOOSE
BETWEEN FOOD AND
HOUSING



HAD TO CHOOSE
BETWEEN FOOD
AND EDUCATION





\$.98



\$3.00 pint

**Include
food in the
conversation**



LASTING IMPACTS: HOUSEHOLD HEALTH STATUS



58%

OF HOUSEHOLDS HAVE A MEMBER WITH HIGH BLOOD PRESSURE



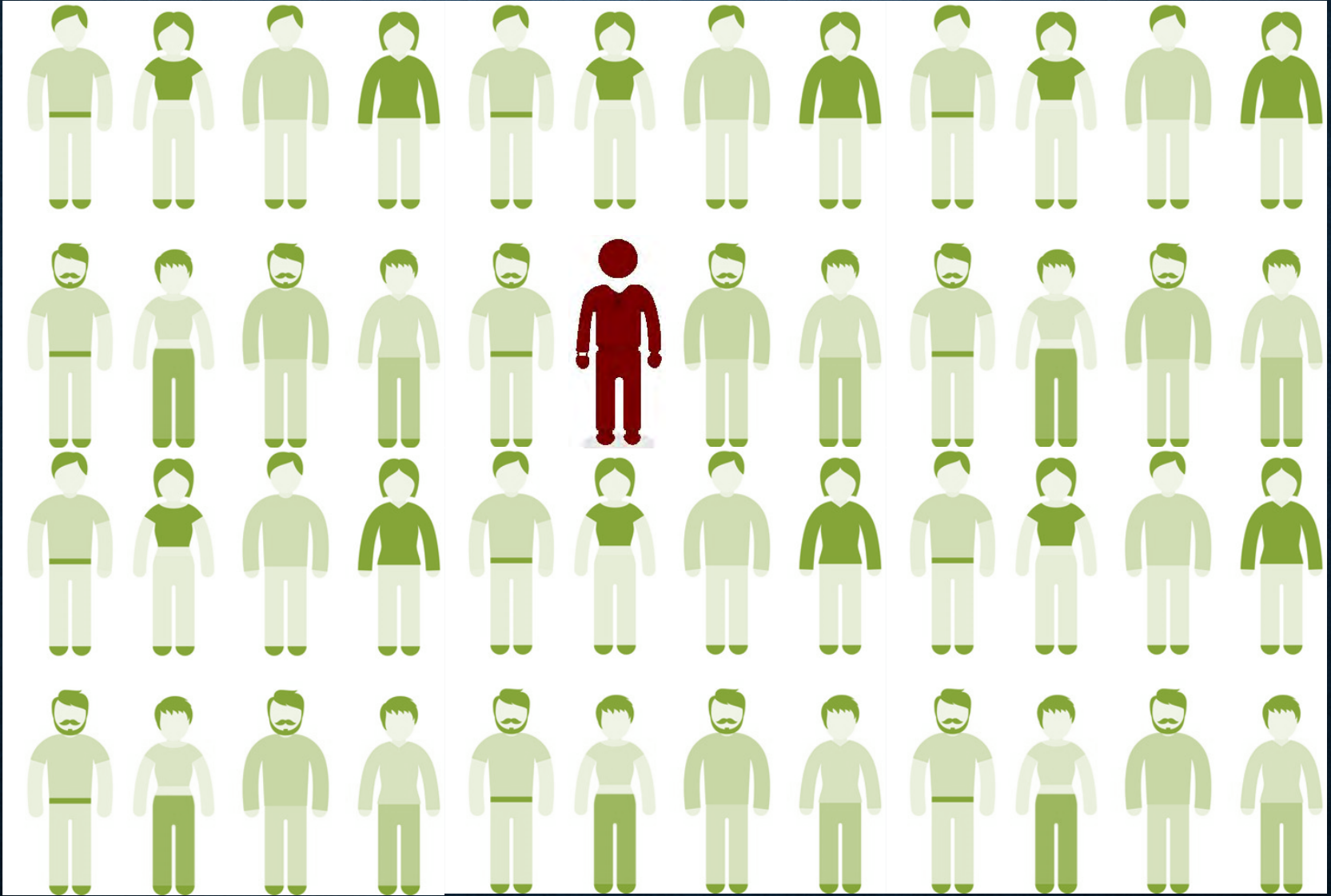
33%

OF HOUSEHOLDS HAVE A MEMBER WITH DIABETES



59%

OF HOUSEHOLDS HAVE UNPAID MEDICAL BILLS



HEALTHCARE COSTS RELATED TO HUNGER

Nationwide
\$130.5 billion
annually



Source: National estimate – Bread for the World

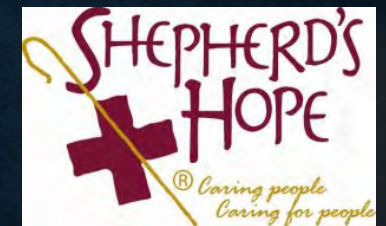
CAN SECOND HARVEST HAVE AN IMPACT ON HEALTHCARE?



HOW CAN WE POSSIBLY WORK ALONGSIDE THE HEALTHCARE INDUSTRY?



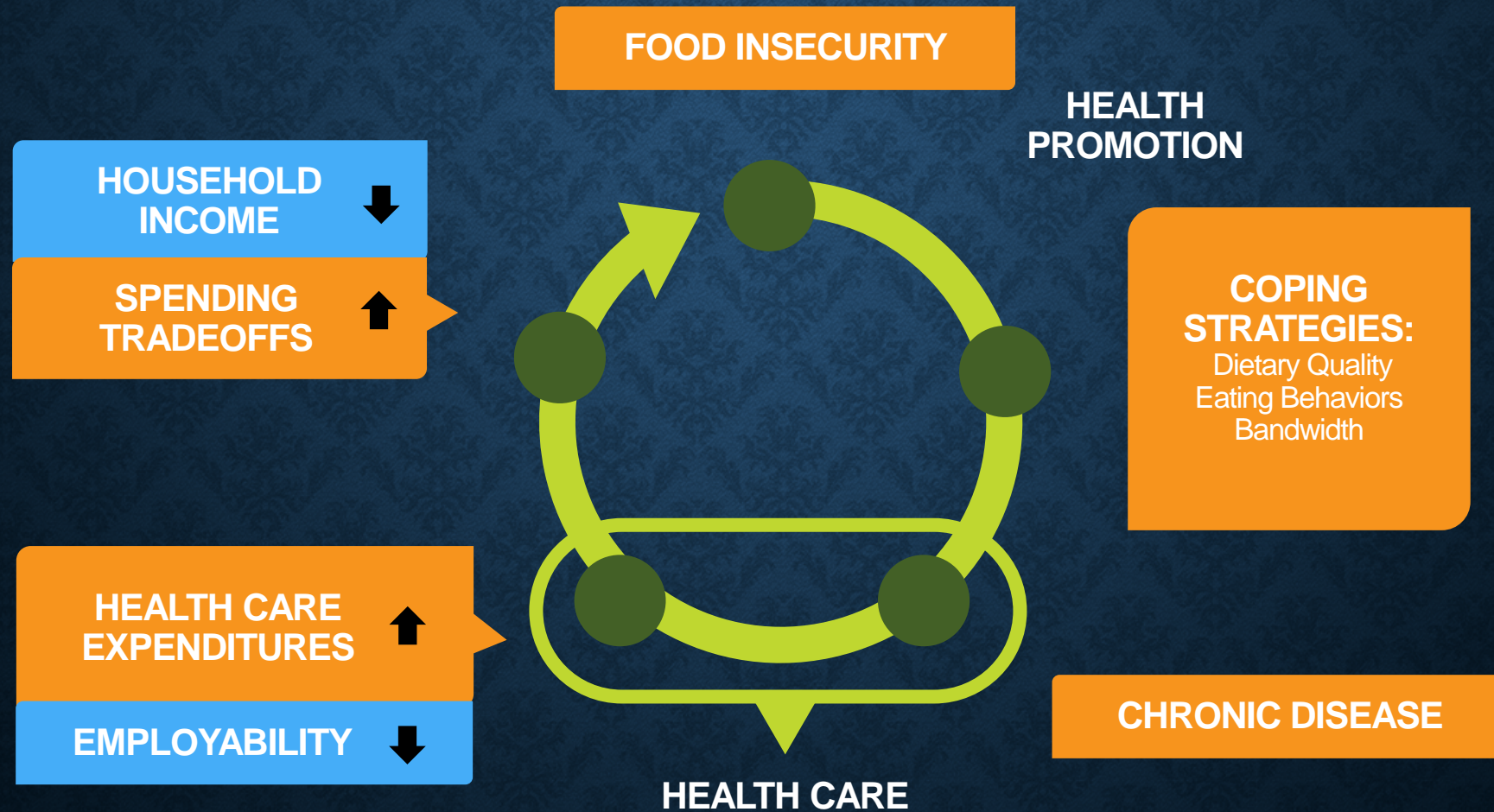
TASKFORCE MEMBERS



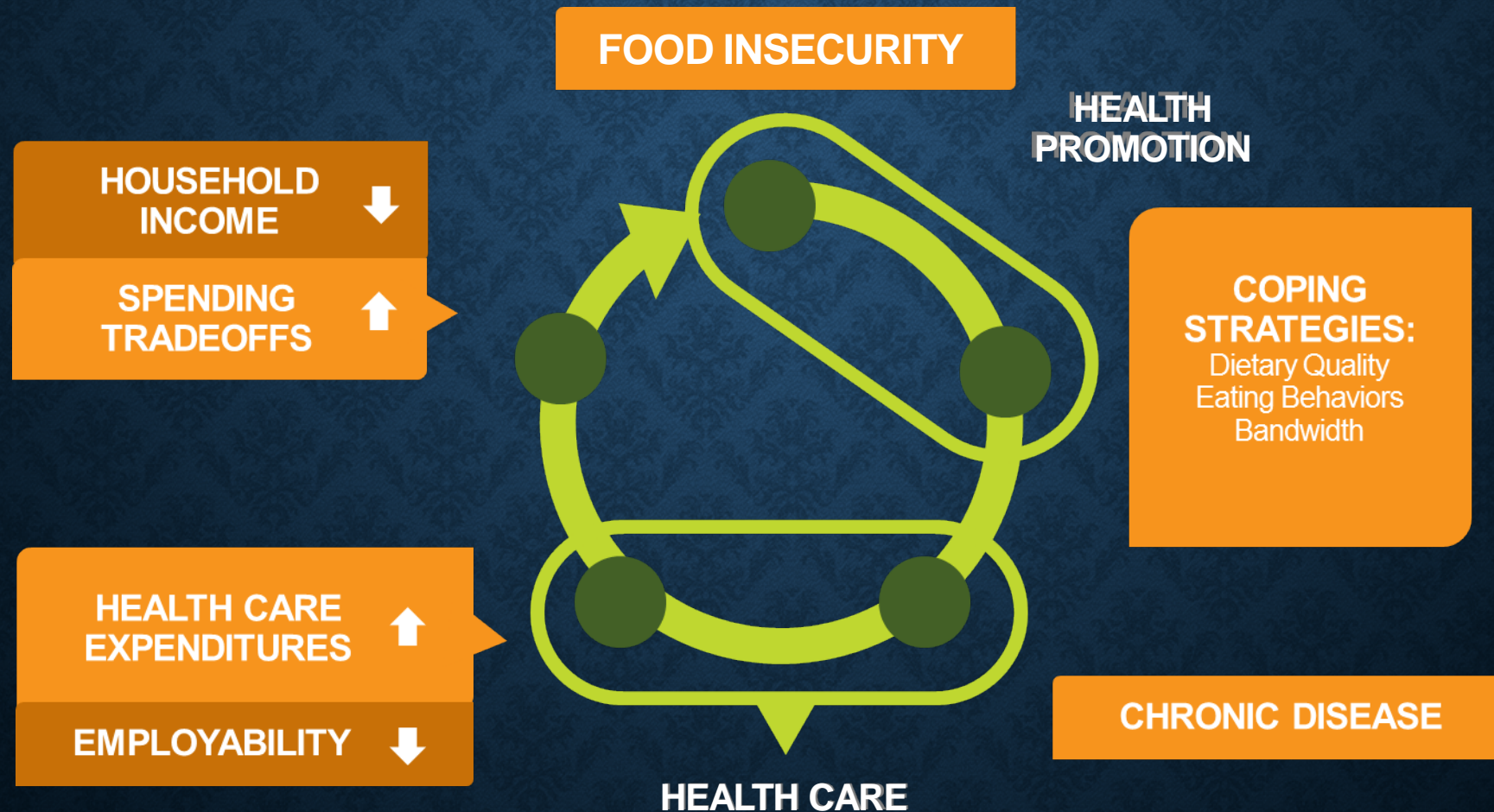
SECOND HARVEST INITIATIVES

1. Three Year Pilot – West Orange Health District
2. One Year Pilot – Orlando Health
3. Diabetes Prevention Program With Food Intervention
 - Feeding America
4. Three Year Program – Winter Park Health Foundation
5. Student Run School Markets

A Conceptual Framework: Cycle of Food Insecurity & Chronic Disease



A Conceptual Framework: Cycle of Food Insecurity & Chronic Disease



ECONOMIC EVIDENCE FOR “FOOD AS MEDICINE”

- Study estimated potential impact of reductions in food security on Medicaid and Medicare costs:
 - A **10%** reduction in food security would reduce Medicaid by **\$1.2 billion**



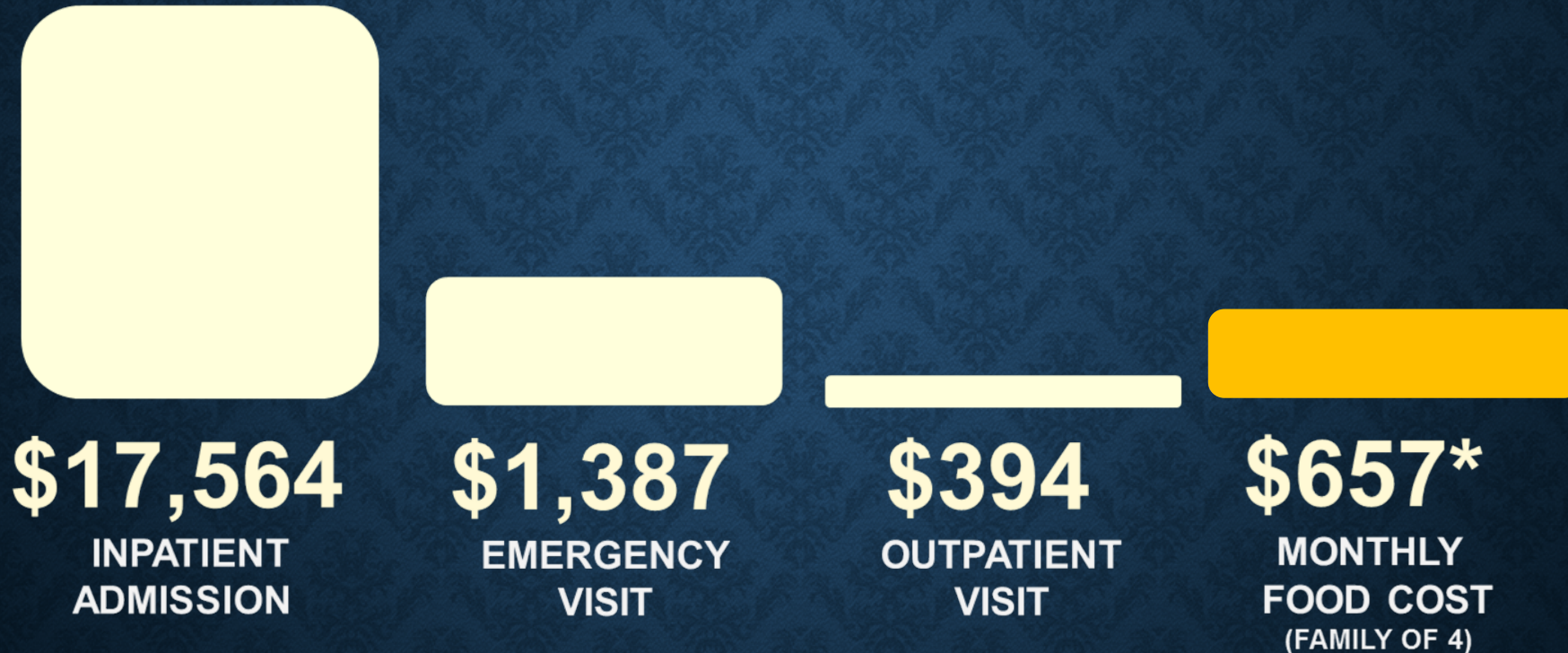
FOOD INSECURE
HOUSEHOLD'S
HEALTHCARE
COSTS WERE
49% HIGHER
THAN THOSE OF
SECURE
HOUSEHOLDS.



SELIGMAN STUDY

- Analyzed admissions of over eight years in CA for hypoglycemia
- 27% increase in hypoglycemia admissions from lower-income patients in the last week of the month
- Hypothesis: Dwindling supplies at the end of the month for those with limited incomes.

COST OF HEALTH CARE FOR LOW BLOOD SUGAR VS. FOOD



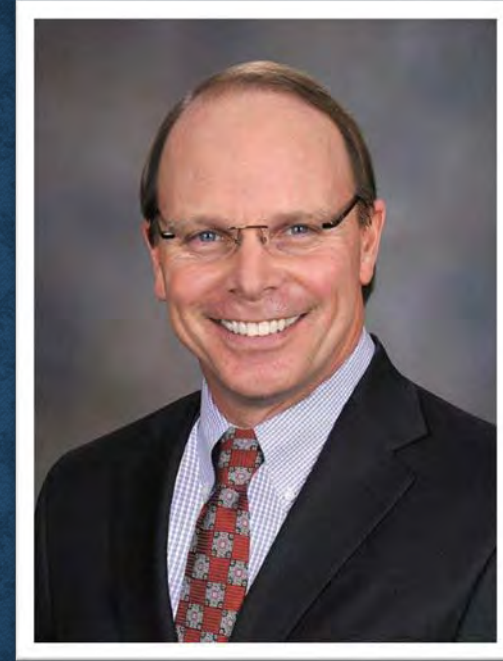
American Journal of Managed Care, 2011.

*Thrifty Food Plan



Tim Cook

Senior Vice President
Florida Hospital West Orange Market and
Administrator, Florida Hospital Apopka



Gregory Ohe

Senior Vice President of Ambulatory
Orlando Health

